

25/01383/FUL

RETROSPECTIVE CHANGE OF USE OF DWELLING
TO ALLOW THE PREMISES TO BE USED FOR
SUPPORTED LIVING FOR UP TO 4 ADULTS WITH
LEARNING DIFFICULTIES (AMENDED PLANS)

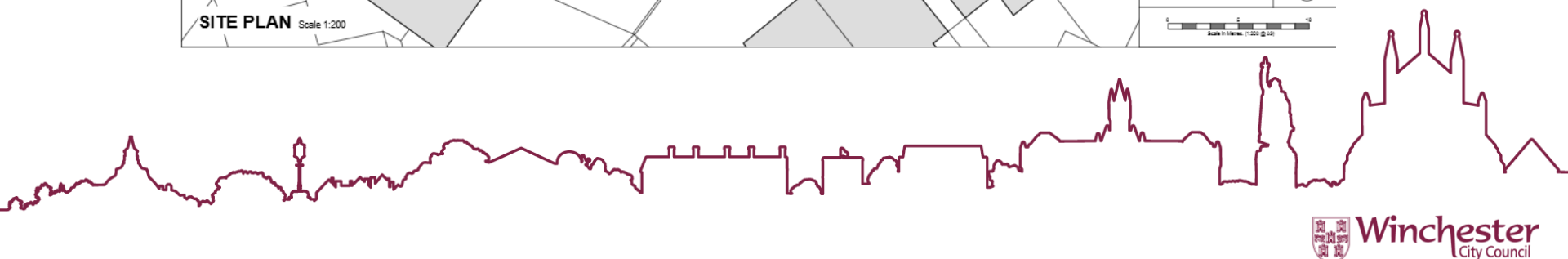
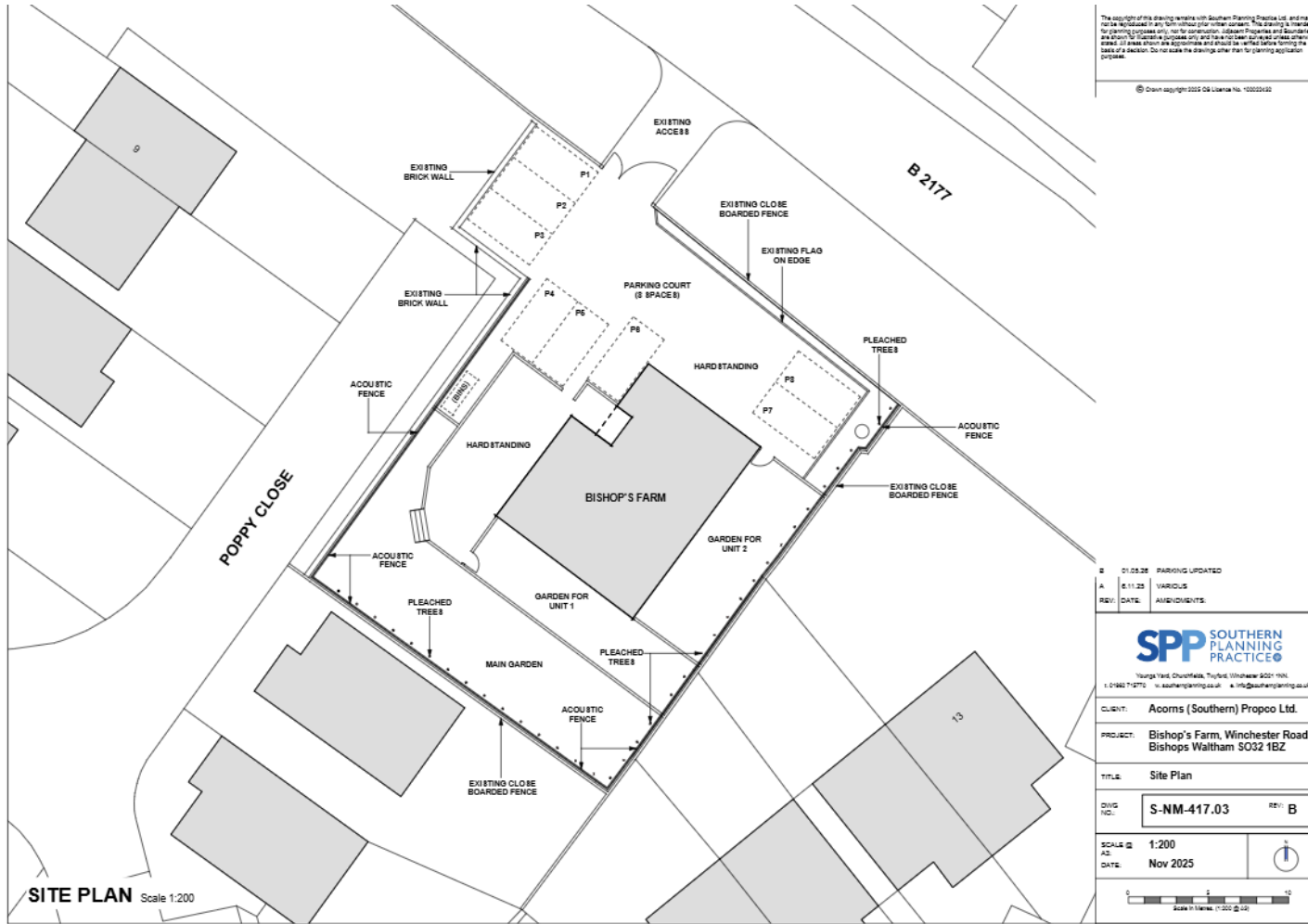
BISHOPS FARM, WINCHESTER ROAD,
BISHOPS WALTHAM



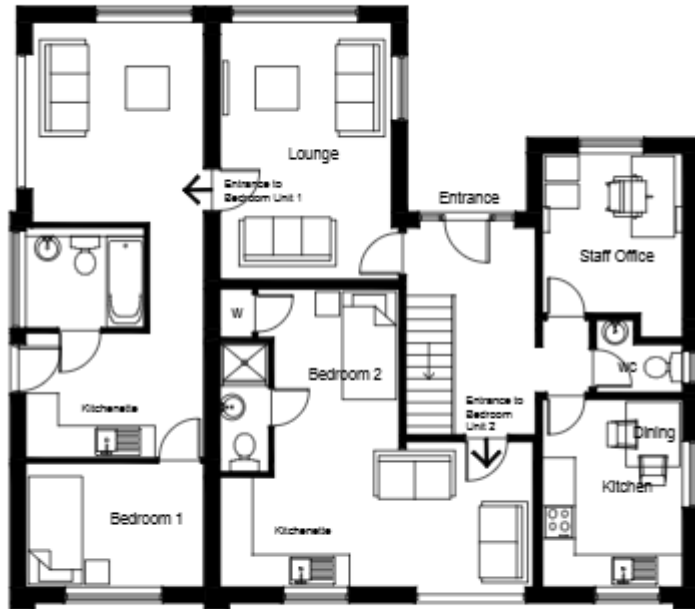
LOCATION PLAN



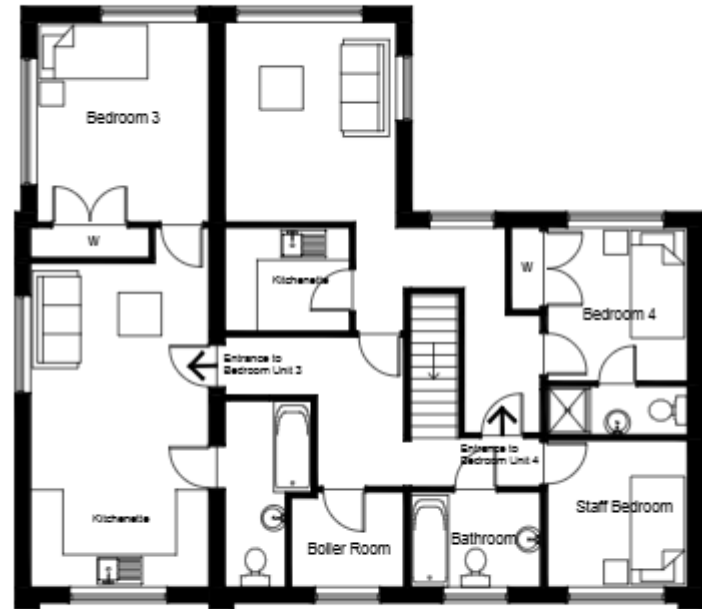
SITE LAYOUT PLAN



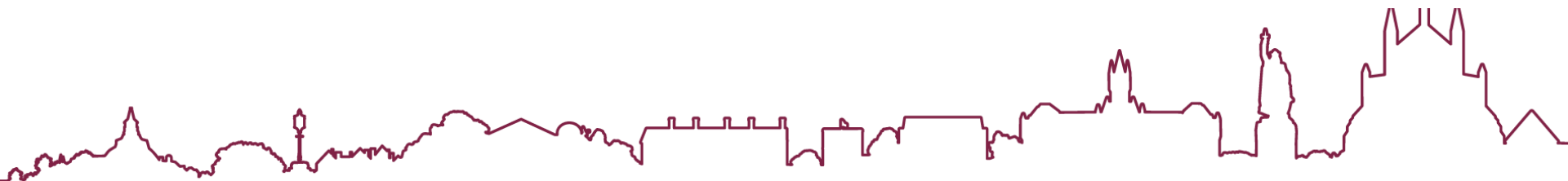
Internal Layout



**EXISTING GROUND FLOOR PLAN
(1:100)**



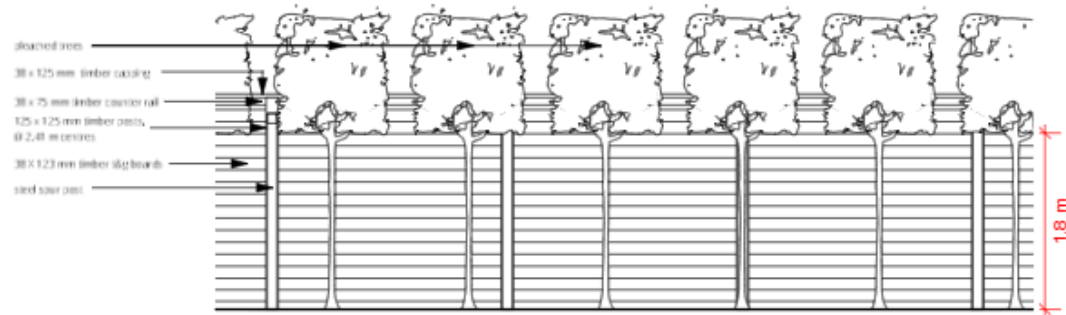
**EXISTING FIRST FLOOR PLAN
(1:100)**



Acoustic Fencing and Pleached Trees



Side Elevation



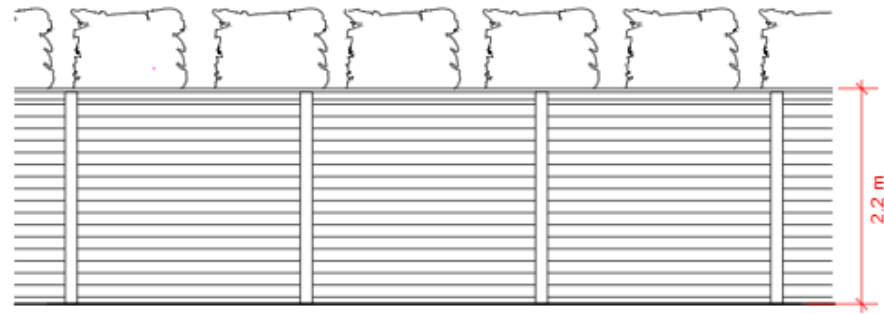
Typical Elevation of Acoustic Fence and Pleached Trees from inside

Pleached Trees
Species to be confirmed
Planted stem height 1.8m

Acoustic Fencing Options from Jacksons Fencing

Option A (as shown)
Acoustic® Reflective Fencing, Height 2.2m
Acoustic barrier with interlocking timber board profile on both sides.
It reduces noise by up to 20dB.
Rating according to BS EN 1793-2:1998
Category - B3
Laboratory sound reduction >28dB
Sound total mass 25kg/m²

Option B
12K Acoustic Enrolence® Fencing, Height 2.2m
Acoustic barrier with interlocking timber board profile on both sides.
It achieves a minimum acoustic specification of 10-12 kg/m².
Same timber construction as Option A, but also:
16G boards 20 x 125 mm
Capping rail 34 x 145 mm
Counter rail 34 x 70 mm



Typical Elevation from outside



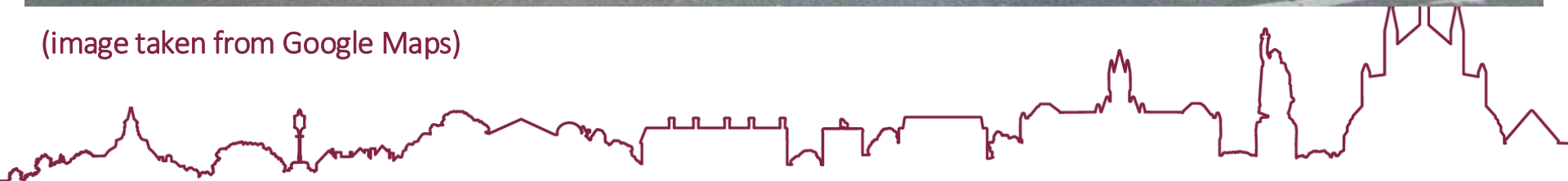
Plan



Entrance of the site – viewed from Winchester Road



(image taken from Google Maps)



Car parking area at the front of the site





South-west elevation



South-east elevation





Garden alongside south east boundary with 12 and 13 Albany Court



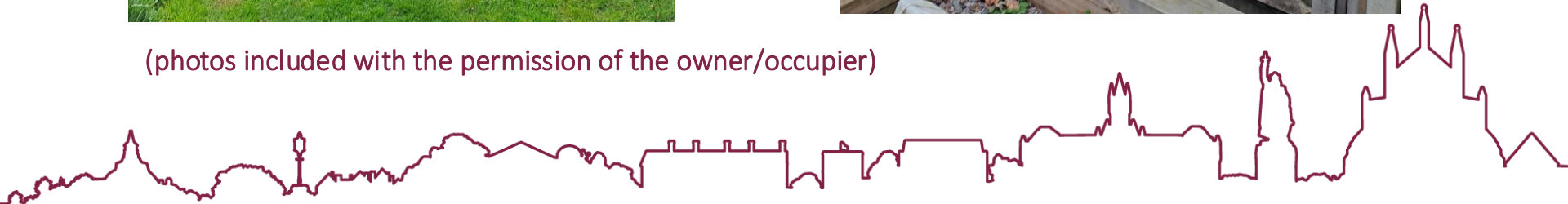
Garden alongside south-west boundary with 10 Poppy Close and 10 Albany Court



View from the garden of no. 13 Albany Court



(photos included with the permission of the owner/occupier)





View from garden of No. 10 Poppy Close
(photos included with the permission of the
owner/occupier)

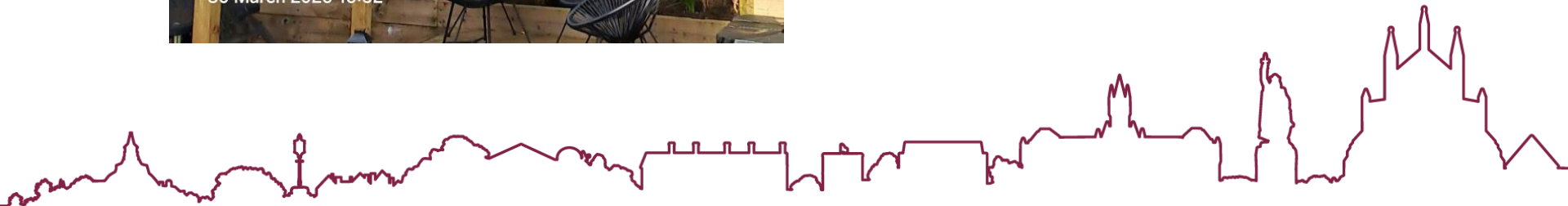
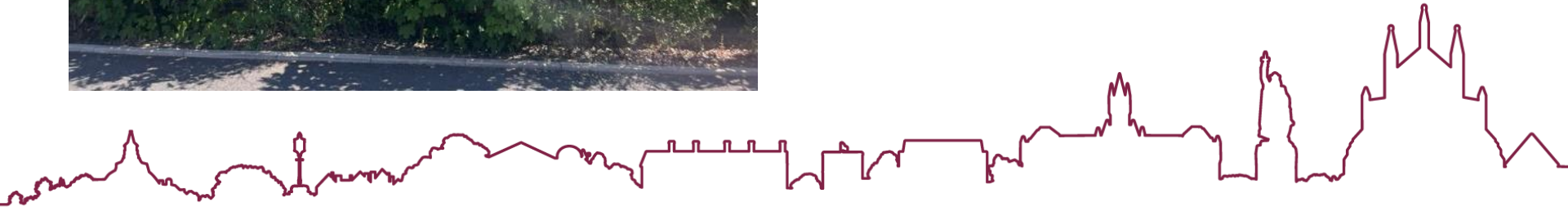


Photo from Poppy Close looking up at Bishops Farm



RECOMMENDATION

Approve subject to conditions